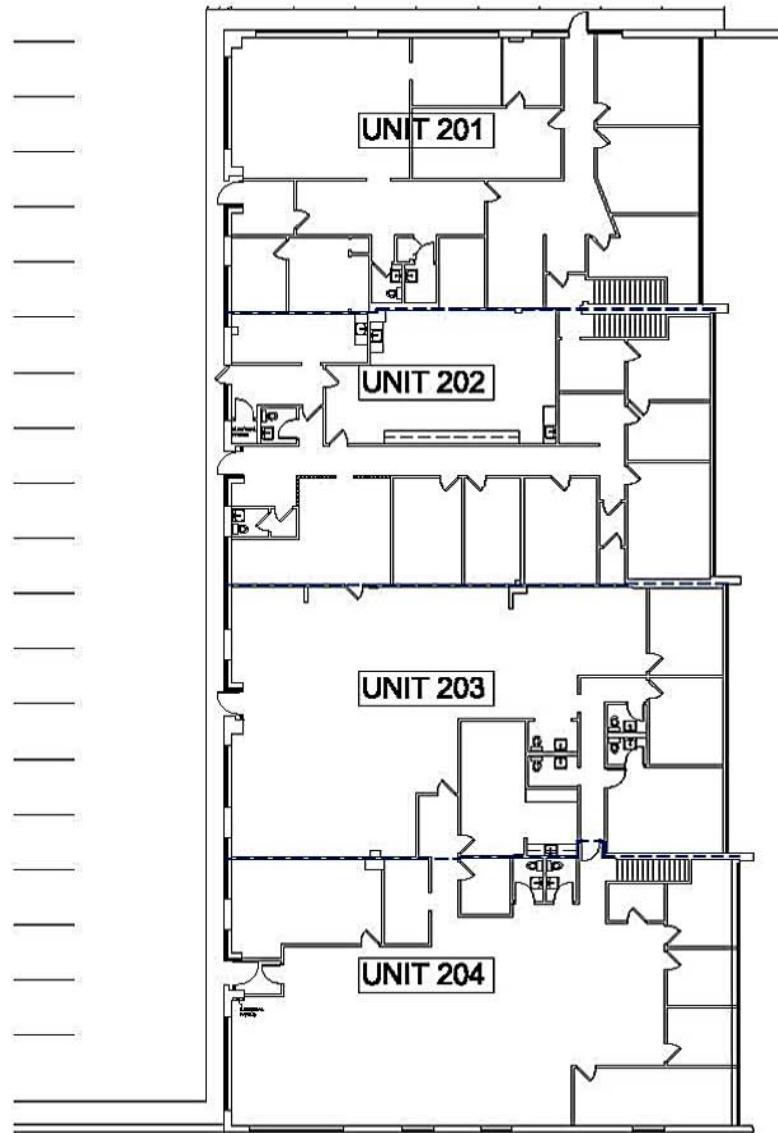


2 2ND FLOOR LOCATION PLAN  
SCALE: NTS



1 EXISTING PLAN  
SCALE: NTS

## UNIT 201-204

95 SEAVIEW BOULEVARD, PORT WASHINGTON, NY 11050

All information contained herein is from sources deemed reliable but is submitted without any representation or warranty as to its accuracy and is subject to errors and omissions of any kind. Changes in rental, terms or other conditions, including without limitation prior leasing or withdrawal without notice, this presentation is for information purposes only and under no circumstances whatsoever is to be deemed a contract, note, memorandum or any other form of binding commitment.

**MILVADO**  
PROPERTY GROUP

575 UNDERHILL • SUITE 200  
SYOSSET, NY 11791

MILVADO.COM • 516.364.5000